



Alain Ellouz
.paris



ATHENA[®] US

.édition

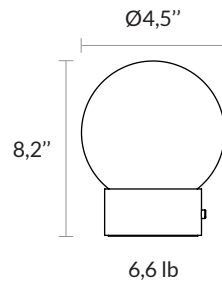


Alain Ellouz
.paris

ATHENA[®] (US)

.édition

NOMADIC LAMP



ATHENA[®]
DESIGN BY ATELIER ALAIN ELLOUZ
MADE IN FRANCE

MATERIALS

Alabaster, brass and painted steel

SOURCE LUMENS

Dimmable intensity, 150 lm maximum
Light temperature : 3000 K

LIGHT SWITCH

Brass button integrated to the lamp :
sensitive switch / dimmer

BATTERY

Lithium-ion polymer battery 2500mAh
2A maximum - 5V
Autonomy : about 8 hours according to intensity
USB-C charging cable provided

REFERENCE

ED-0007

WARRANTY

2 years warranty



Non-contractual pictures